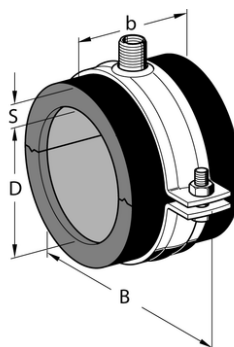
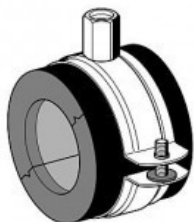


Clamp LKS H



APPLICATION

Suitable for secure prevention of condensation water at the pipe support location of refrigeration and cold-water pipelines. An optimal diffusion-tight connection with the pipe insulation is easily and safely achieved by fixing usual insulation materials to the clamp faces using adhesive. Recommended up to -0°C at normal ambient condition.

SCOPE OF DELIVERY

Consisting of pipe clamp and insulation insert. The one-piece insulation insert comprising two joined PUR elements forms a comprehensive connection between PUR element and pipe clamp all around the pipe.

The outer edges of the PUR elements are equipped with elastomer foam and coated by a black aluminium foil.

Type	Nominal thickness of the insulation [mm]	Size	Length of PUR element ^b [mm]
LKS H	13	15-89	50
		102-168	100

PROSYSTEM ITALIA SRL

Via Friuli venezia Giulia, 15
30030 Pianiga - Venezia - Italy
T +39.041.510.1622
F +39.041.5131351

P.IVA 03470750278
Reg.Imp. Ve 03470750278
Cap.soc. € 90.000,00
REA Padova n° 311219

info@prosystemitalia.com
prosystemitalia.com

TECHNICAL DATA

The regulations of DIN 4140 have to be respected (an existing gap has to be sealed with sealant).

Clamp material: Steel, electro-galvanised

Insulation insert: Free of halogens

PUR core: Specific gravity 80 or 120 kg/m³

Thermal conductivity: $\lambda = 0.024 - 0.026 \text{ W/(mK)}$ at 0°C

$\lambda = 0.038 \text{ W/(mK)}$ at 10°C

$\lambda = 0.040 \text{ W/(mK)}$ at 40°C

Steam diffusion resistance factor: $\mu \geq 7000$

Fire resistance: B2 (DIN 4102)

Temperature range: -40°C up to +105°C

Insulation insert: Up to 18 dB(A)

Storage temperature: $\geq 10^\circ\text{C}$

Storage period: 1 year

Type	Pipe Ø D[mm]	B [mm]	Insulation S[mm]	Thread connection
LKS 15	15.0	76.0	13.0	M8/M10
LKS 18	18.0	76.0	13.0	M8/M10
LKS 22	22.0	91.5	13.0	M8/M10
LKS 25	25.0	91.5	13.0	M8/M10
LKS 28	28.0	99.0	13.5	M8/M10
LKS 30	30.0	99.0	13.5	M8/M10
LKS 35	35.0	105.0	13.5	M8/M10
LKS 38	38.0	105.0	14.0	M8/M10
LKS 42	42.0	112.0	14.0	M8/M10
LKS 44	44.5	112.0	14.0	M8/M10
LKS 48	48.3	125.0	14.0	M8/M10
LKS 54	54.0	134.0	14.0	M8/M10
LKS 57	57.0	134.0	15.0	M8/M10

PROSYSTEM ITALIA SRL

Via Friuli venezia Giulia, 15
30030 Pianiga - Venezia - Italy
T +39.041.510.1622
F +39.041.5131351

P.IVA 03470750278
Reg.Imp. Ve 03470750278
Cap.soc. € 90.000,00
REA Padova n° 311219

info@prosystemitalia.com
prosystemitalia.com

LKS 60	60.3	141.0	15.0	M8/M10
LKS 64	64.0	141.0	15.0	M8/M10
LKS 70	70.0	146.5	15.0	M8/M10
LKS 76	76.1	151.0	15.0	M8/M10
LKS 80	80.0	159.5	15.0	M8/M10
LKS 88	88.9	173.0	15.0	M8/M10
LKS 101	101.6	186.0	15.5	M8/M10
LKS 108	108.0	193.0	15.5	M8/M10
LKS 114	114.3	193.0	15.5	M8/M10
LKS 133	133.0	215.0	16.0	M8/M10
LKS 139	139.7	243.0	16.0	M12/M16/1/2"
LKS 159	159.0	265.0	16.0	M12/M16/1/2"
LKS 168	168.3	276.0	16.0	M12/M16/1/2"

Codice	Nome	Peso	Numero di pezzi
114693		0.07	48
114695		0.07	48
114697		0.08	36
114698		0.08	30
114700		0.09	30
114701		0.09	30
114703		0.09	30
114704		0.1	30

PROSYSTEM ITALIA SRL

Via Friuli venezia Giulia, 15
30030 Pianiga - Venezia - Italy
T +39.041.510.1622
F +39.041.5131351

P.IVA 03470750278
Reg.Imp. Ve 03470750278
Cap.soc. € 90.000,00
REA Padova n° 311219

info@prosystemitalia.com
prosystemitalia.com

Codice	Nome	Peso	Numero di pezzi
114707		0.1	24
114708		0.17	24
114709		0.17	24
114711		0.19	24
114712		0.19	24
114713		0.2	24
114715		0.2	18
114716		0.21	18
114717		0.22	18
114718		0.23	18
114719		0.29	18
114720		0.32	6
114721		0.34	6
114724		0.35	6
114726		0.39	6
114727		1.02	6
114728		1.17	6
114729		1.22	6

PROSYSTEM ITALIA SRL

Via Friuli venezia Giulia, 15
30030 Pianiga - Venezia - Italy
T +39.041.510.1622
F +39.041.5131351

P.IVA 03470750278
Reg.Imp. Ve 03470750278
Cap.soc. € 90.000,00
REA Padova n° 311219

info@prosystemitalia.com
prosystemitalia.com